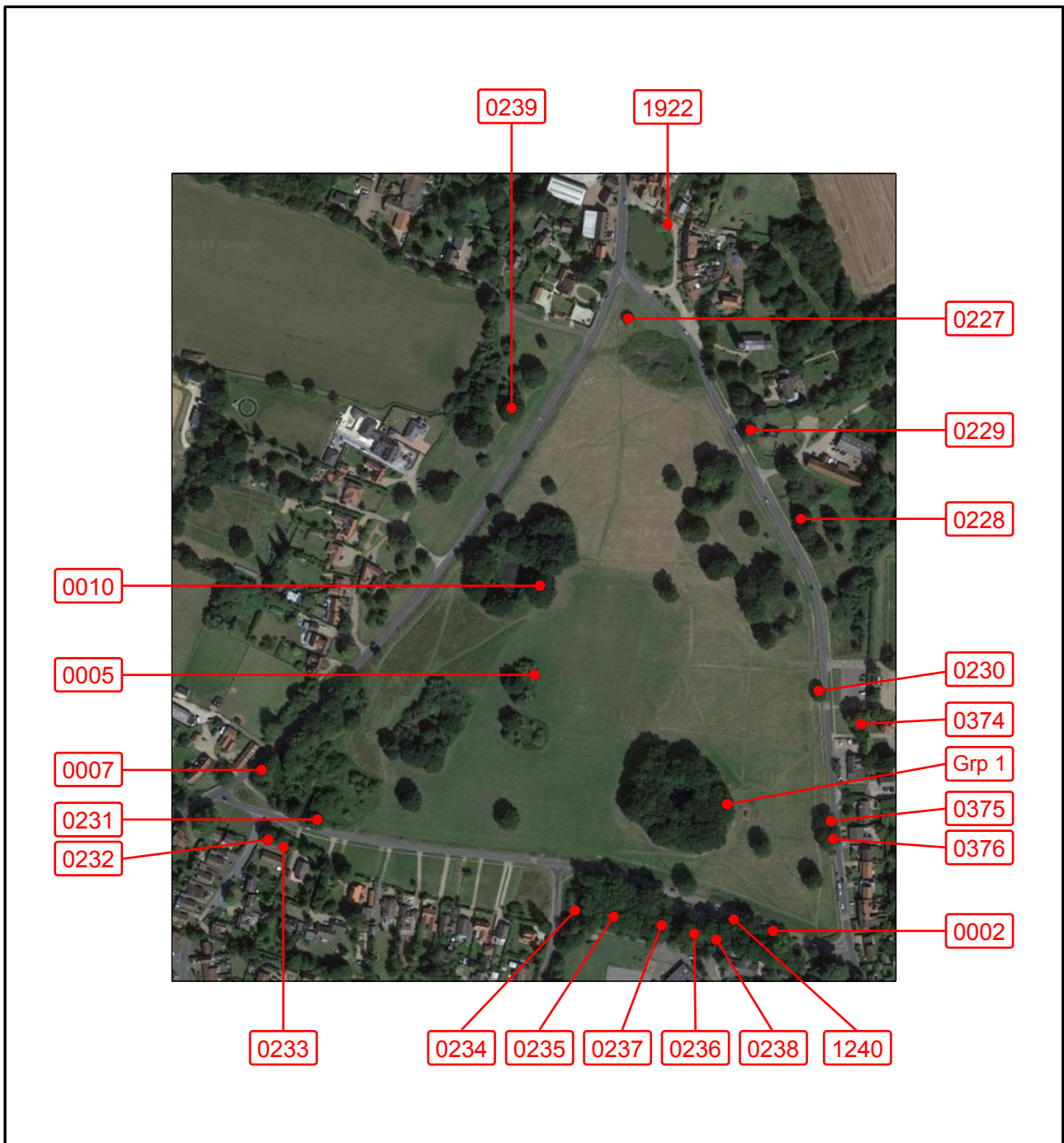


# Mulbarton Common

## Tree Survey – February 2021



South Norfolk Council is responsible for the management of trees on Mulbarton Common. Trees are tagged with a number the first time they are found to need work after a survey. The most recent survey of all the trees on The Common was carried out in February 2021 and all the survey findings and recommendations are shown in the table on the next page. Some trees have been tagged in previous years but are not marked on the map because no work was recommended for them this year. They may need work again in future years.

<b>Tag</b>	<b>Species</b>	<b>Survey date</b>	<b>Finding</b>	<b>Recommendation</b>
0002	Horse chestnut Aesculus hippocastanum	February 2021	Heavy branches	Reduce lower limbs by up to 3m
0005	Oak Quercus robur	February 2021	Shedding limbs	Remove hangers and reduce crown by 3m
0007	Sycamore copse Acer pseudoplatanus	February 2021	Tree of poor form	Fell to ground twelve marked trees in copse
0010	Oak, two trees Quercus robur	February 2021	Deadwood	Remove deadwood
0227	Horse chestnut Aesculus hippocastanum	February 2021	Fungal infection	Pollard branches to a height of about 2.5m
0228	Oak Quercus robur	February 2021	Storm damage	Remove damaged branches
0229	Ash Fraxinus excelsior	February 2021	Heavy branches	Reduce three limbs to the south by 1.5m
0230	Oak Quercus robur	February 2021	Low canopy	Lift canopy to highways requirements, e.g. 5m
0231	Goat willow Salix caprea	February 2021	Suspended or broken branch	Coppice
0232	Sycamore, 6 tree stems Acer pseudoplatanus	February 2021	Fungal infection	Fell and coppice
0233	Goat willow Salix caprea	February 2021	Major trunk lean	Coppice
0234	Oak Quercus robur	February 2021	Dead tree	Fell to 2m and leave on the ground as habitat
0235	Oak Quercus robur	February 2021	Signs of root and basal decay	Pollard to a height of 8m
0236	Sycamore Acer pseudoplatanus	February 2021	Suppressed crown	Fell to the ground
0237	Sycamore Acer pseudoplatanus	February 2021	Dead tree	Fell to the ground
0238	Ash Fraxinus excelsior	February 2021	Low canopy	Lift canopy to highways requirements, e.g. 5m
0239	Oak Quercus robur	February 2021	Tree of poor form	Reduce crown by 3m
0374	Lime Tilia Cordata	February 2021	Climbing survey required	No action pending climbing survey
0375	Oak Quercus robur	February 2021	Storm damage	Remove damaged branches
0376	Oak Quercus robur	February 2021	Low canopy	Lift canopy to highways requirements, e.g. 5m
Grp 1	Oak (Blakes Pond Wood) Quercus robur	February 2021	Deadwood	Reduce deadwood over footpaths only
1240	Oak Quercus robur	February 2021	Low canopy	Reduce low limbs and lift canopy over highway
1922	Willow Salix	February 2021	Fungal infection	Reduce dead limbs to 2m and pollard at 5m